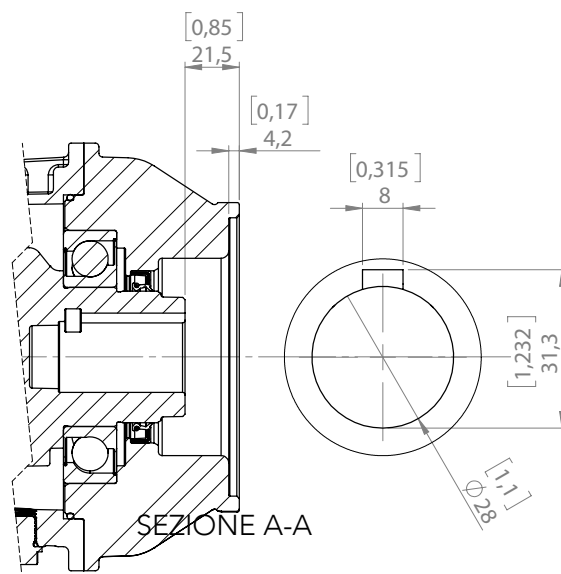
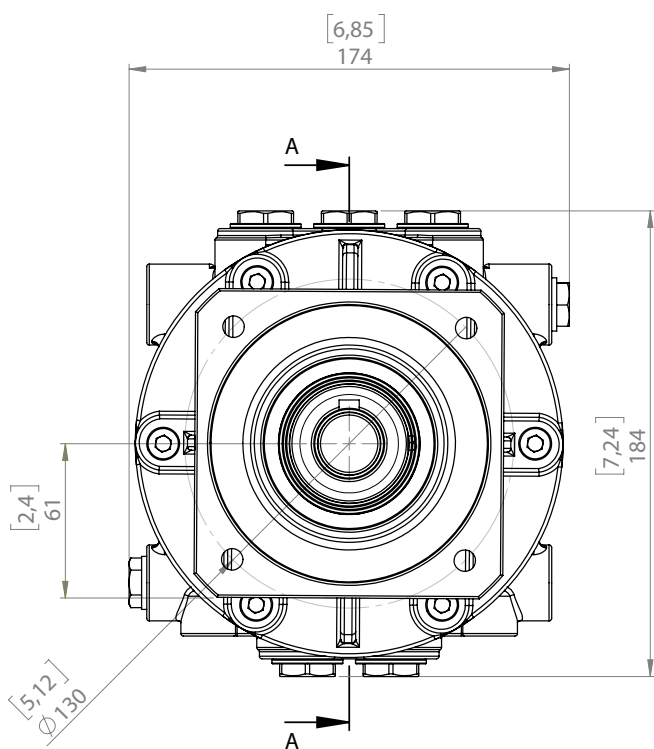
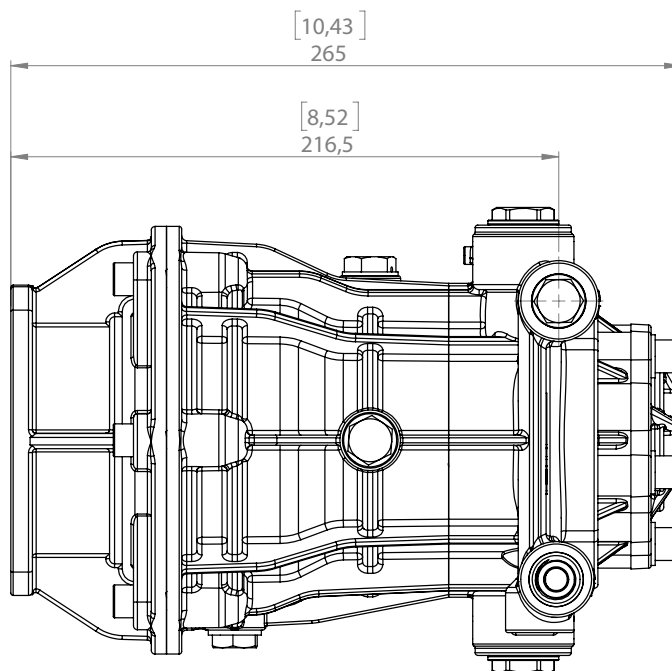
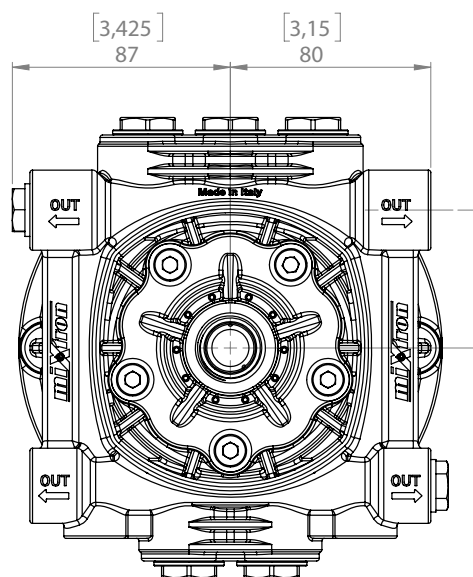




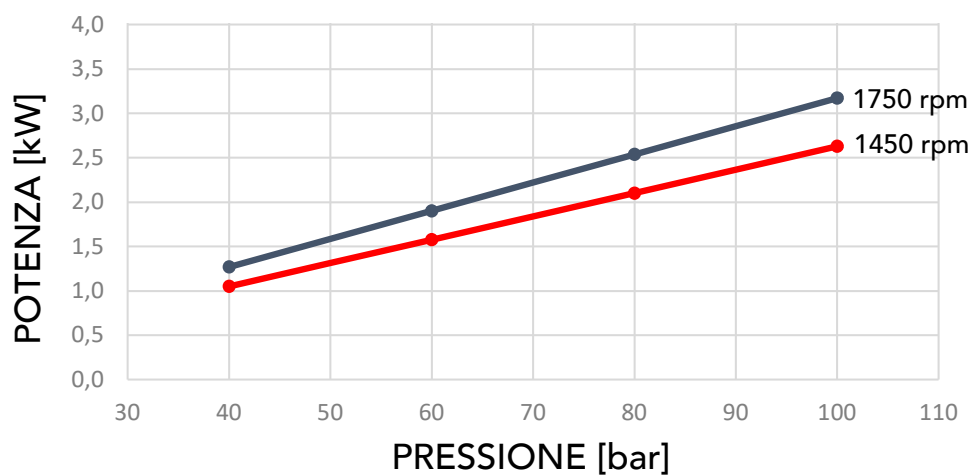
Alpha 2.13.100.D28

MEC 100-112

codice/code 9300210



	INLET	G3/4" - F
	OUTLET	G3/8" - F










Alpha 2.13.100.D28

MEC 100-112

codice/code 9300210

DATI PRESTAZIONALI / PERFORMANCES DATA

	Pressione/Pressure	bar	100	
		psi	1450	
	Giri/RPM	50 Hz	1450	
		60 Hz	1750	
	Portata/Flow rate	50 Hz	l/min	13.0
			gpm	3.4
		60 Hz	l/min	15.5
			gpm	4.1
	Motore/Engine	50 Hz	Hp	3.6
			Kw	2.7
		60 Hz	Hp	4.3
			Kw	3.2
	Peso/Weight	Kg	7.5	
		lbs	16.5	

